



ZENITH  
CONSTRUCTION

COMPANY PROFILE



# INTRODUCTION

*WE FOSTER A FOUNDATION BASED ON DIVERSIFIED RESIDENTIAL, COMMERCIAL & INDUSTRIAL PROJECTS - A LEGACY WE'VE SUSTAINED SINCE 1983.*

Zenith Construction, formerly known as M/s. Noor Brothers, has consistently demonstrated a commitment to excellence. The company has forged a path of continuous progress, successfully undertaking a myriad of Residential, Commercial, and Industrial projects boasting a diverse range of accomplishments in sectors such as Textile, Food, and Banking.

Over the past four decades, our unwavering dedication to professionalism has positioned us as a trusted partner in the construction industry, ensuring the successful execution of projects across various sectors.

## WHEN YOU CHOOSE US

You choose four decades of excellence. An organization that has upheld its reputation by delivering unparalleled expertise in every sector including;



**STRUCTURAL**



**CIVIL**



**INTERIOR WORKS**





### **OUR VISION**

Building foundations for future generations.

### **OUR MISSION**

Add value to the construction industry by delivering the highest level of quality construction services on schedule at market competitive prices.



# OUR CORE VALUES

Creating a safe and productive work environment is non-negotiable, and we unwaveringly prioritize it in all aspects of our operations.



**SAFETY**



**QUALITY**

We are dedicated to maintaining the highest standards of excellence and delivering our best, following meticulously defined procedures.

Upholding our word with honesty and reliability is the guiding principle that defines our conduct both internally and with our customers.



**INTEGRITY**



**TEAMWORK**

Fostering a collaborative environment by offering top-notch training programs, comprehensive benefits and growth opportunities.



## **HSE - HEALTH, SAFETY & ENVIRONMENT**

At Zenith, our commitment extends unwaveringly to prioritizing the health and safety of our workforce and the people who live and work close to our projects.

This commitment underscores our corporate ethos and resonates across all levels of our organization, ensuring a steadfast focus on the well-being of our personnel and the broader community. Therefore, actively cultivating a pervasive Health and Safety culture throughout our sites, recognizing it as a shared responsibility among all stakeholders—from Senior Management to our dedicated site workers.



### **OUR HSE PRACTICES**

Actively organizing on-going trainings for all employees and subcontractors to make sure they can carry out their work safely.

Our workforce actively engages in continuous monitoring, proactively identifying and reporting any emerging hazards to prevent accidents and maintain a hazard-free workplace.

Senior Management frequently visit project sites to speak to workers about HSE, ensuring that resources are readily available for the effective implementation of our Health and Safety policies.

We implement a risk-based approach in the planning and operation of our projects, seeking ways to eliminate accidents, injury and illnesses, reduce the use of energy and minimize material wastage to prevent pollution.



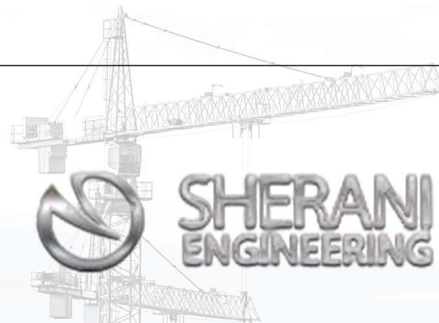


## QUALITY CONTROL

At Zenith Construction, we are dedicated to delivering an unwavering execution that aligns seamlessly with our contractual obligations. Recognizing the critical significance of assuring the quality, durability, precise placement, and optimal performance of construction materials, we follow a meticulous approach.

Our proficient quality control team diligently oversees, documents, and rigorously tests materials at every phase of the project. This strategic emphasis on quality assurance not only mitigates the risk of expensive reworks but also ensures adherence to project timelines. By meticulously scrutinizing earthwork solutions, foundations, concrete, and pavement, we proactively safeguard against premature failures, reinforcing our commitment to excellence in construction.

# OUR VALUED CUSTOMERS





# LIST OF PROJECTS

## 01 METIER PHARMACEUTIQUE

**Consultant:** Fida Hussein Associates | **Area:** 225,000 Sq.ft  
**Location:** Korangi Creek Industrial Park | **Scope:** Civil

## 02 NIMRA CORNER

**Consultant:** Vertex Structural Solutions | **Area:** 100,000 Sq.ft  
**Location:** North Karachi Industrial Area | **Scope:** Civil

## 03 METIER IMPRESSIONS

**Consultant:** Fida Hussein Associates | **Area:** 30,000 Sq.ft  
**Location:** Korangi industrial Area | **Scope:** Civil & Interior

## 04 SEYDOX LABORATORIES

**Consultant:** Vertex Structural Solutions | **Area:** 12,000 Sq.ft  
**Location:** Block 22, Federal B Area

## 05 ELAHIS

**Consultant:** Engr. Khalid Hafeez | **Area:** 100,000 Sq.ft  
**Location:** Sector 12B, North Karachi Ind. Area | **Scope:** Civil

## 06 NIMRA MOHSIN PURI

**Consultant:** Vertex Structural Solutions | **Architect:** Map3 Designs  
**Location:** North Karachi Ind. Area | **Area:** 45,000 Sq.ft | **Scope:** Civil

## 07 AFFAN ULAH KHAN

**Consultant:** Vertex Structural Solutions | **Architect:** AU Studio  
**Location:** 6B, North Karachi Ind. Area | **Scope:** Civil | **Area:** 7,000 Sq.ft

## 08 NIMRA ESTATES

**Consultant:** Engr. Khalid Hafeez | **Architect:** AU Studio | **Area:** 7,000 Sq.ft  
**Location:** Main Rashid Minhas Road, F.B. Area | **Scope:** Civil & Interior

## 09 HBL

**Consultant:** Engr. Khalid Hafeez | **Area:** 6,500 Sq.ft  
**Location:** North Karachi Ind. Area | **Scope:** Civil

## 10 BANK ALFALAH

**Consultant:** Vertex Structural Solutions | **Area:** 8,100 Sq.ft  
**Location:** Sector 12B, North Karachi, Ind. Area | **Scope:** Civil





# METIER PHARMACEUTIQUE

**Consultant:** Fida Hussein Associates | **Location:** Korangi Creek Industrial Park | **Area:** 225,000 Sq.ft | **Scope:** Civil





# NIMRA CORNER

**Consultant:** Vertex Structural Solutions | **Location:** North Karachi Industrial Area | **Area:** 100,000 Sq.ft | **Scope:** Civil





# METIER IMPRESSIONS

**Consultant:** Fida Hussein Associates | **Location:** Korangi industrial Area | **Area:** 30,000 Sq.ft | **Scope:** Civil & Interior





# SEYDOX LABORATORIES

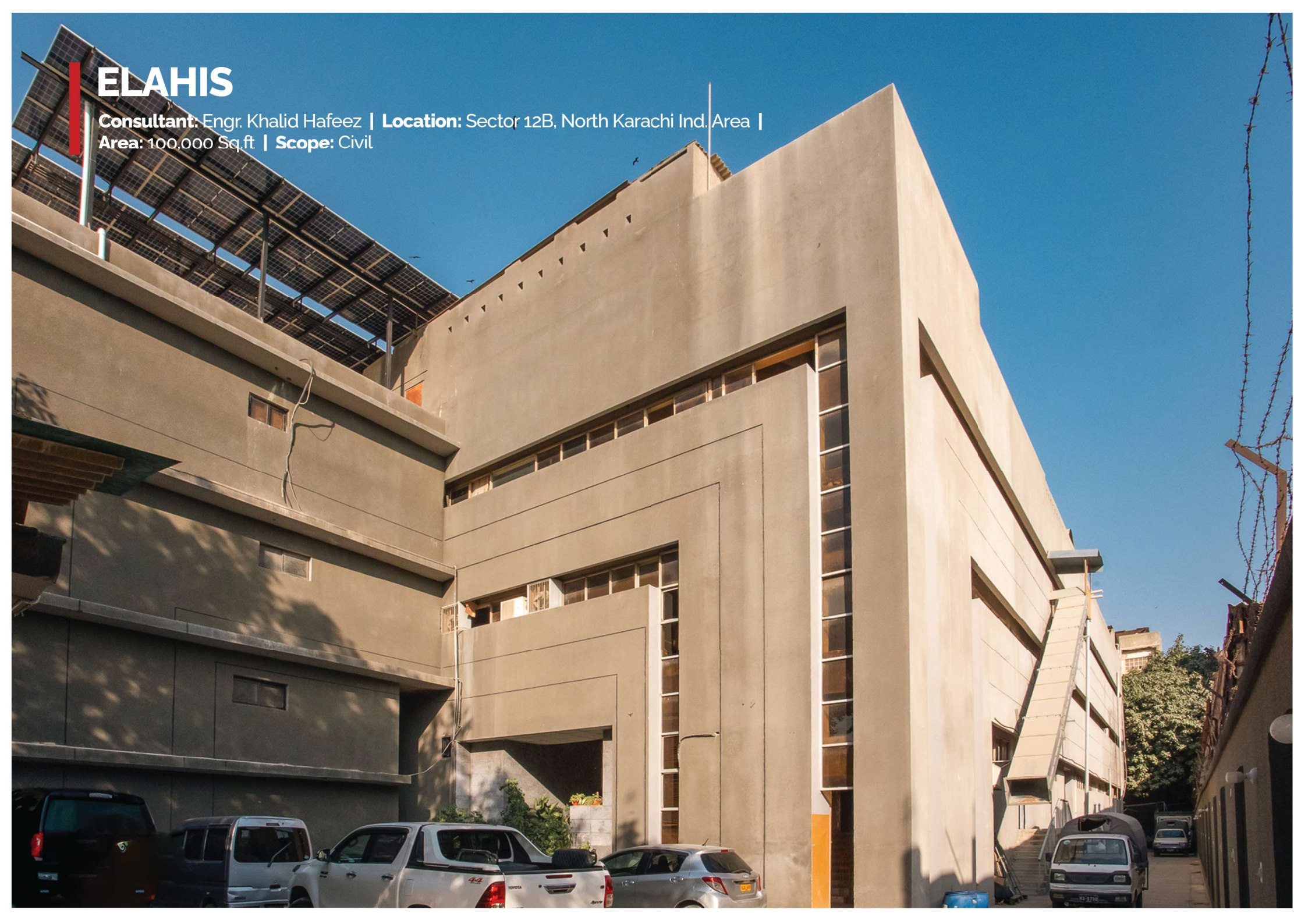
**Consultant:** Vertex Structural Solutions | **Location:** Block 22, Federal B Area | **Area:** 12,000 Sq.ft





# ELAHIS

**Consultant:** Engr. Khalid Hafeez | **Location:** Sector 12B, North Karachi Ind. Area |  
**Area:** 100,000 Sq.ft | **Scope:** Civil





# NIMRA MOHSIN PURI

**Consultant:** Vertex Structural Solutions | **Architect:** Map3 Designs |

**Location:** North Karachi Ind. Area | **Area:** 45,000 Sq.ft | **Scope:** Civil





# AFFAN ULLAH KHAN

**Consultant:** Vertex Structural Solutions | **Architect:** AU Studio | **Location:** 6B, North Karachi Ind. Area | **Area:** 7,000 Sq.ft | **Scope:** Civil





100

## Interior



# HBL

**Consultant:** Engr. Khalid Hafeez | **Location:** North Karachi Ind. Area |  
**Area:** 6,500 Sq.ft | **Scope:** Civil

**HBL HABIB BANK**  
حبیب بینک

**HBL SME Banking**

ابہرچھوٹا کاروبار بنے بڑا



لون کی اسان فراہمی

کم سے کم دستاویزات

مخصوص ریلیشن شپ مینیجر

**HBL HABIB BANK**  
حبیب بینک

North Karachi Industrial Area Branch  
نہ کراچی انڈسٹریل ایریا برانچ

111-111-425 | www.hbl.com | HBL Mobile | Kconnect

**MCB Bank**  
Limited

ایم سی بی بینک لمیٹڈ

**MCB smart**  
BUSINESS ACCOUNT



**HOUSE**  
LEARNING SUPPLIES OF GARMENTS & TEXTILE ACCESSORIES  
north@gmail.com  
321-8241939  
321-2244952

**Mitza Engine**  
0306-2298514

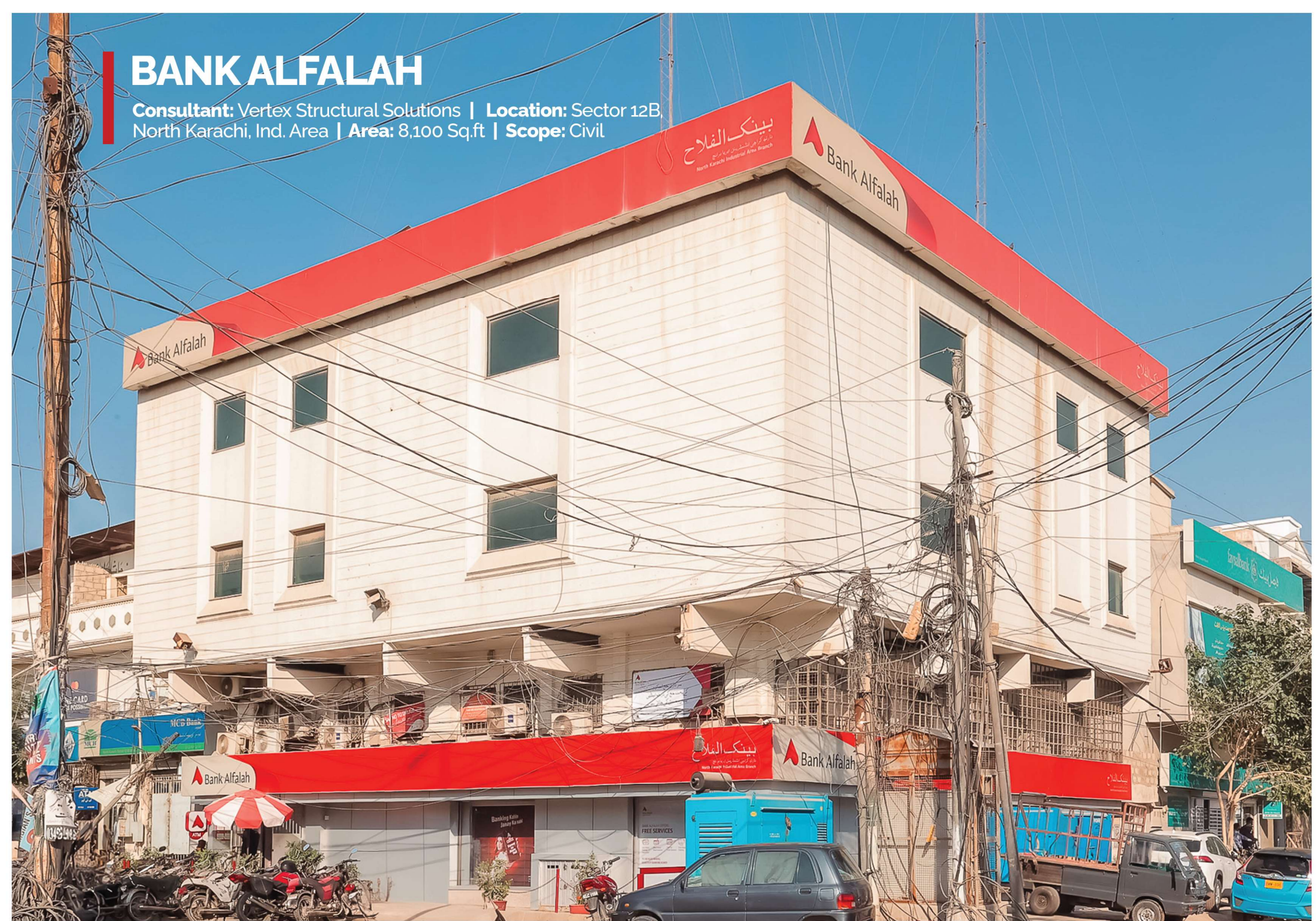
**ONE**  
ATM

**ATM**  
Foreign Transfer  
Salary Slip Payment  
Balance Enquiry  
Mobile Top Up  
And more



# BANK ALFALAH

**Consultant:** Vertex Structural Solutions | **Location:** Sector 12B  
North Karachi, Ind. Area | **Area:** 8,100 Sq.ft | **Scope:** Civil

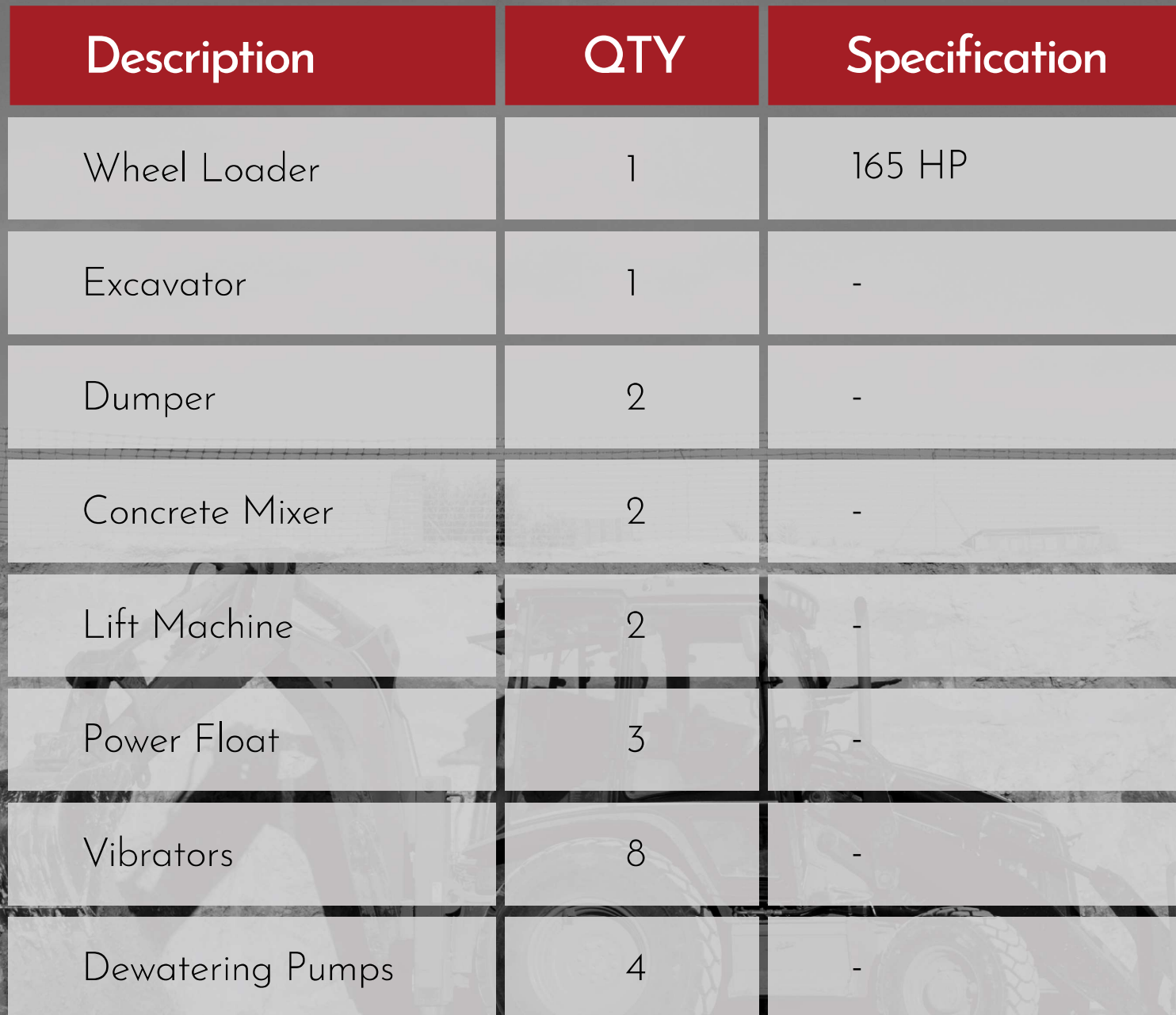




# OUR EQUIPMENT







Description	QTY	Specification
Wheel Loader	1	165 HP
Excavator	1	-
Dumper	2	-
Concrete Mixer	2	-
Lift Machine	2	-
Power Float	3	-
Vibrators	8	-
Dewatering Pumps	4	-



# FORM WORK

Description	QTY	Specification
Steel Formworks	35,000 sq.ft	Size 1m x 1m Size 1.2m x 0.6m
Steel Scaffolding Tubes	5500 No.s	20' Long 10' Long



# RE-BAR FABRICATION

Description	QTY	Specification
Bar Cutting Machine	2	-
Bar Bending Machine	2	-

# SURVEY EQUIPMENT

Description	QTY	Specification
Total Station	1	Kolida Make
Level Instrument	2	Sokkia



# CONTAINERS

Description	QTY	Specification
Store Container	1	20' Long
Office Container	3	20' Long 10' Long

# GENERATORS

Description	QTY	Specification
Generator	1	50 KVA
Generator	2	20 KVA
Generator	2	10 KVA





A-3, Block 19, F.B. Area,  
Karachi - 75950



+92 302 8257176



+92 21 36361974



[jak@zenithconstruction.com.pk](mailto:jak@zenithconstruction.com.pk)